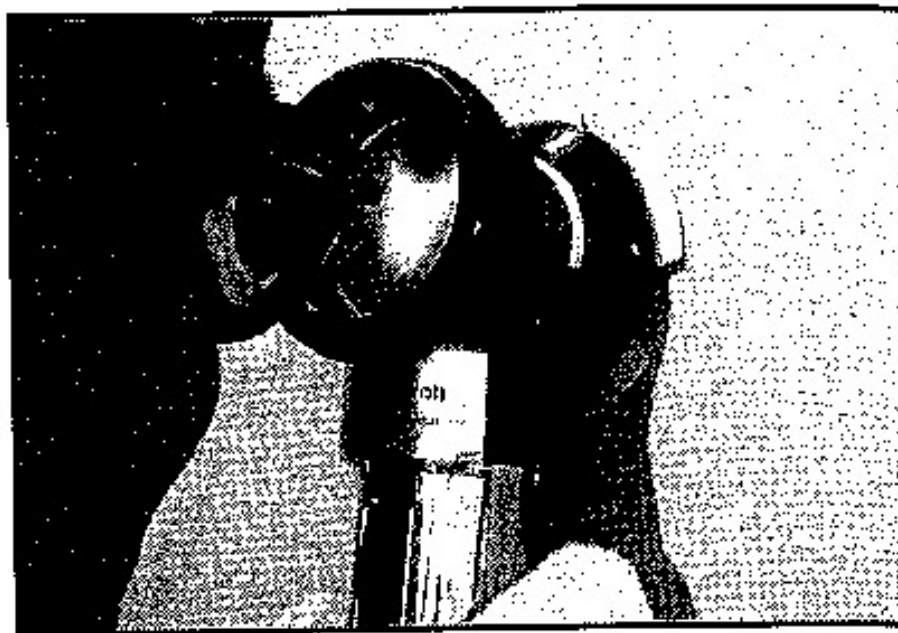
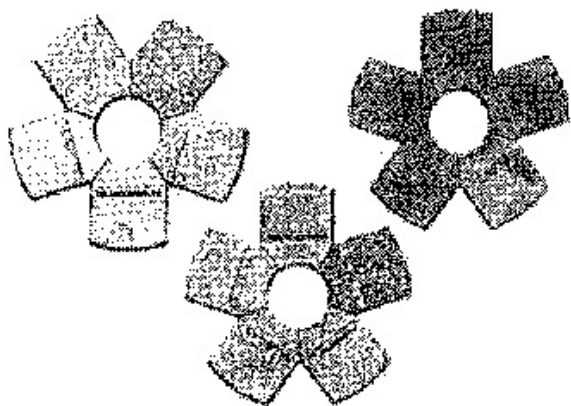


KEANE-TATOR
SURFACE PROFILE COMPARATOR
for **METALLIC GRIT BLAST**
cleaned surfaces





OTHER COMPARATOR DISCS

GRIT/SLAG (G/S) - For profile determination of substrates blast cleaned with metallic grit and other non-metallic abrasives.

SHOT (SH) - For profile determination of substrates blast cleaned steel shot.

SAND (S) - For profile determination of substrates blast cleaned sand.



Distributor:

KTA-TATOR INC.

145 Enterprise Drive
Pittsburgh, PA 15275

1-800-KTA-GAGE

www.ktagage.com

NUMBER OF MEASUREMENTS



1.5 G/S 76

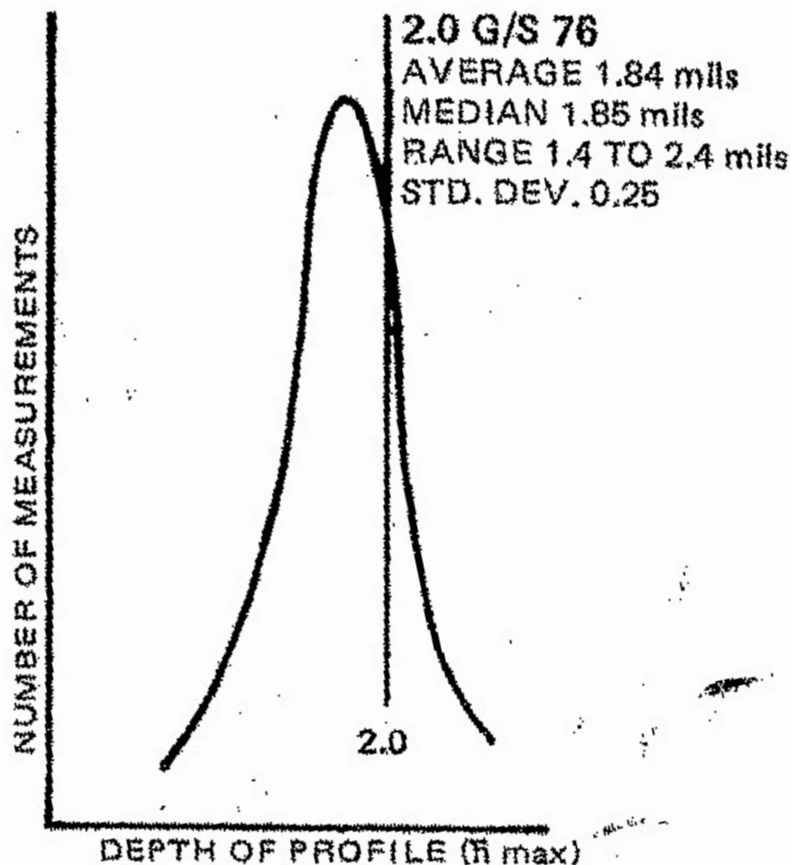
AVERAGE 1.33 mils

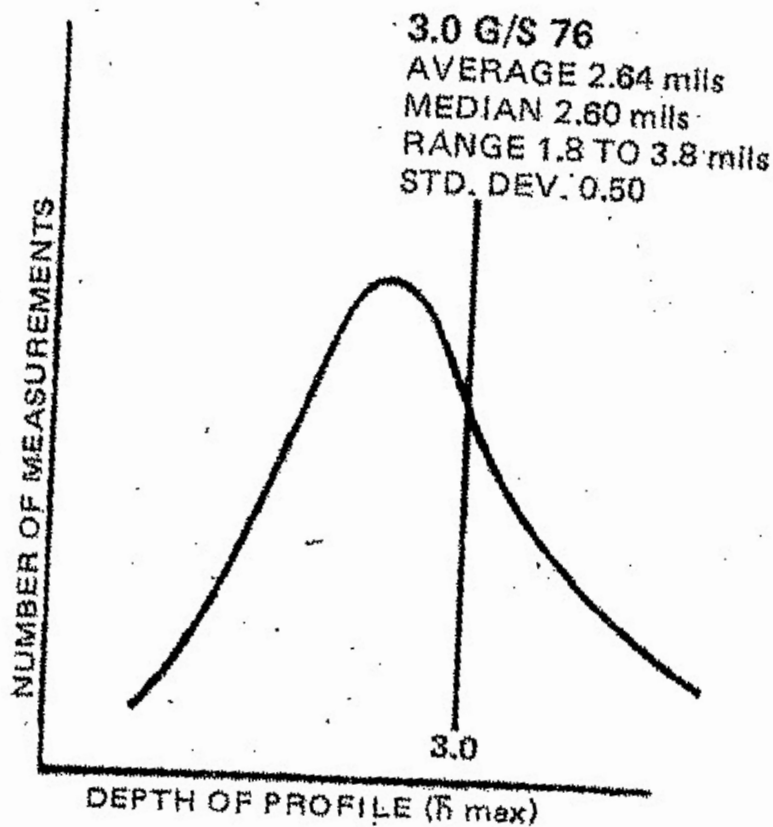
MEDIAN 1.30 mils

RANGE 1.1 TO 1.6 mils

STD. DEV. 0.13

DEPTH OF PROFILE (h max)





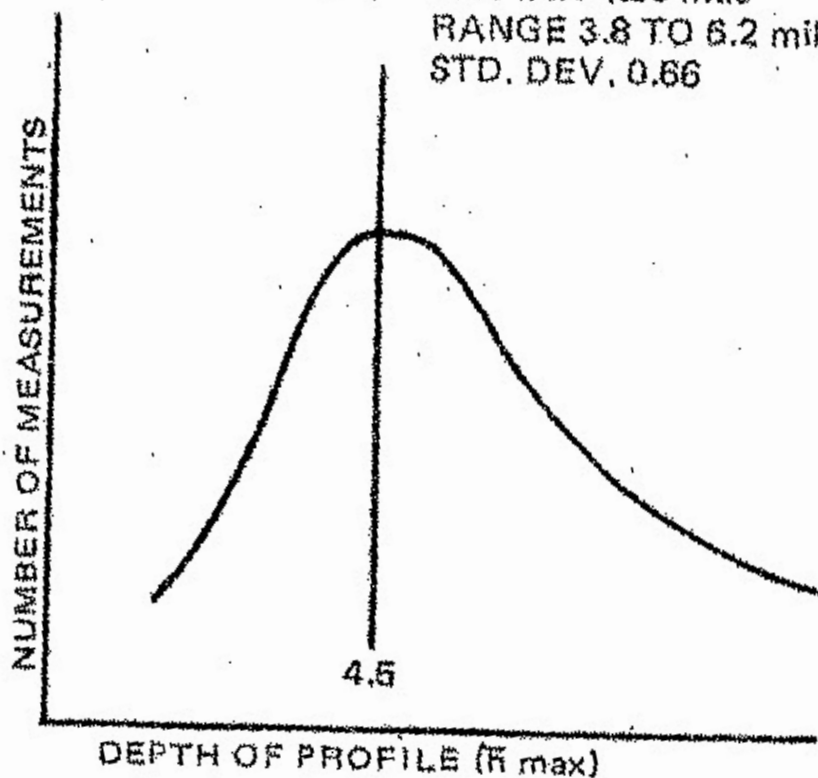
4.5 G/S 76

AVERAGE 4.88 mils

MÉDIAN 4.85 mils

RANGE 3.8 TO 6.2 mils

STD. DEV. 0.66



5.5 G/S 76

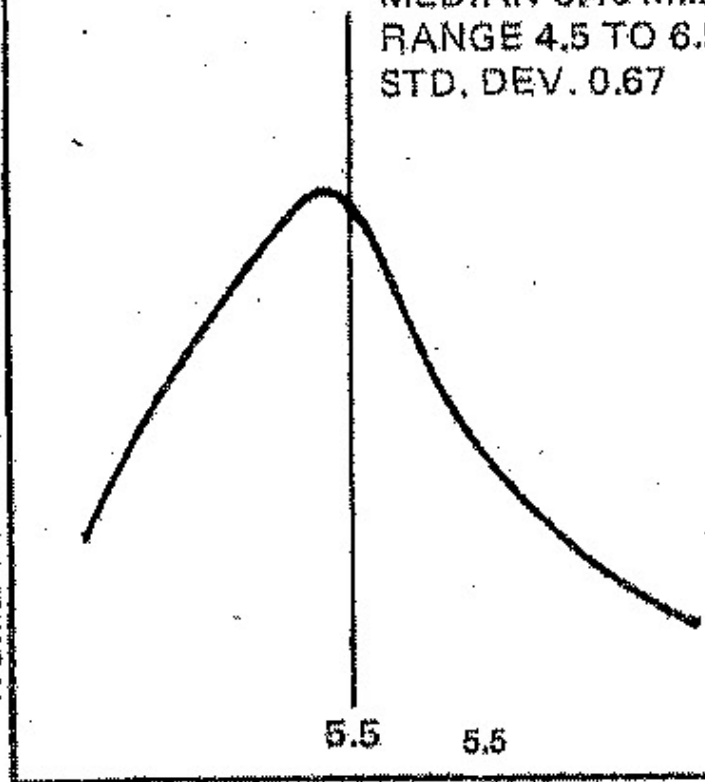
AVERAGE 5.42 mils

MEDIAN 5.40 mils

RANGE 4.5 TO 6.9 mils

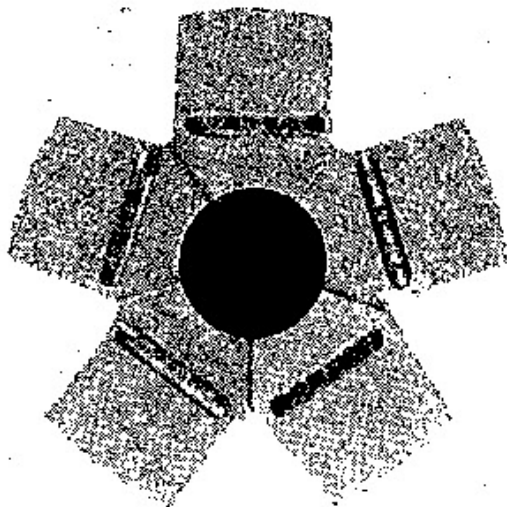
STD. DEV. 0.67

NUMBER OF MEASUREMENTS



DEPTH OF PROFILE (\bar{h} max)

REFERENCE DISC DESCRIPTION



The comparator disc is comprised of five sections, each with a different anchor pattern depth. Each section is marked first giving the nominal anchor pattern depth in mills (one mil = 25.4 microns); next a "GS" indicating a grit/slag (metallic grit) abrasive and a "76" indicating the year the master disc was made.

HOW TO USE

The comparator disc can be used as either a visual or tactile reference.

To use as a visual reference, center the disc on the bottom of the magnifier.

Place the magnifier (with disc attached) on the surface of the sand blasted steel and select the reference most closely approaching the roughness of the sand blast. Comparing a field sand blast in the "V" notch separating two reference segments may provide greater accuracy. Roughness may lie between two segments and be designated, for example 1.5S70.

To use as a tactile reference, the roughness of a field sand blast as felt by one's fingertip, or a soft wooden stylus, can be compared with the roughness of a segment on the comparator disc.

TECHNICAL INFORMATION

- A. Reference Disc** — The Kearie-Tator grit/slag comparator has as its basic component a high purity nickel reference disc comprised of five segments with nominal anchor patterns of 1.5, 2.0, 3.0, 4.5, and 5.5 mils. (One mil = 25.4 microns.) The reference disc is an electroformed copy of a master disc, duplicated to a maximum tolerance of $\pm .05$ mils. The master disc segments were selected from carbon steel plates blast cleaned with a variety of metallic grit operating mixes (G 14 to G 80) at different distances and angles from the source. Segments of the master disc and the electroform copy were measured in the Steel Structures Painting Council Laboratory at the Mellon Institute of Carnegie Mellon University, Pittsburgh, Pennsylvania.
- B. Anchor Pattern Measurement** — The profile was obtained by focusing a calibrated optical microscope first on the highest peak and

then the lowest valley in the field of view, noting the movement distance. Measurements were made at 250X (18 mil field diameter) and 100X (45 mil field diameter).

Measurements at higher magnifications are preferred when "fine" profiles are being measured because of greater precision due to lesser depth of field. Measurement of "coarse" profiles is done at lower magnification to include more peaks. Because of the larger field of view at 100X, the statistical probability of a larger peak being measured at 100X versus 250X is slightly greater than six times.

Information regarding the "average maximum profile" (hmax) of each segment of the reference disc is provided in the accompanying graphs.

Reference: J. D. Keane, J. A. Bruno, Raymond E. F. Weaver, SURFACE PROFILE FOR ANTI-CORROSION PAINTS; October 25, 1976 by Steel Structures Painting Council

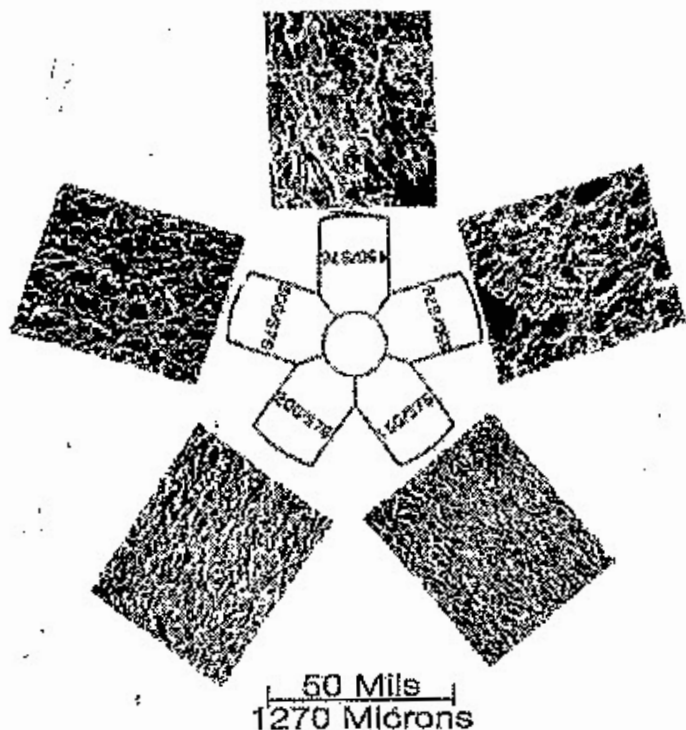
TYPICAL PROFILES PRODUCED BY SOME COMMERCIAL ABRASIVE MEDIA

ABRASIVES	MAXIMUM MESH SIZE	\bar{h} max
Steel Abrasives		
Shot S-230	20	2.2 ± 0.3
Shot S-280	18	2.5 ± 0.4
Shot S-330	16	2.8 ± 0.5
Shot S-390	14	3.5 ± 0.7
Grit G-50	30	1.6 ± 0.3
Grit G-40	20	2.4 ± 0.5
Grit G-25	16	3.1 ± 0.7
Grit G-14	12	5.1 ± 0.9
Mineral Abrasives		
Flint Shot	Medium-Fine	2.7 ± 0.4
Silica Sand	Medium	2.9 ± 0.4
Boiler Slag	Medium	3.1 ± 0.5
Boiler Slag	Coarse	3.7 ± 0.7
Heavy Mineral Sand	Medium- Fine	2.6 ± 0.4

Profile will vary somewhat with angle and velocity of particle, hardness of surface, amount of recycling and degree of cleaning.

Reference: Steel Structure Painting Council

**Keane-Tator Profile Comparator
Grit Blasted Disc**



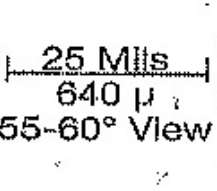
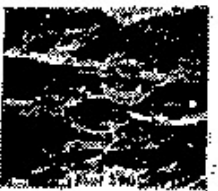
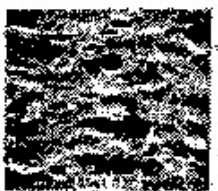
Scanning Electron Micrographs 45° View

SEM Micrographs Showing Qualative
Features of Some Blast Cleaned Surfaces
(Near White Blast-Cleaned: SSPC-SP10

SHOT

GRIT

NON-METALLIC



25 Mils
640 μ
55-60° View